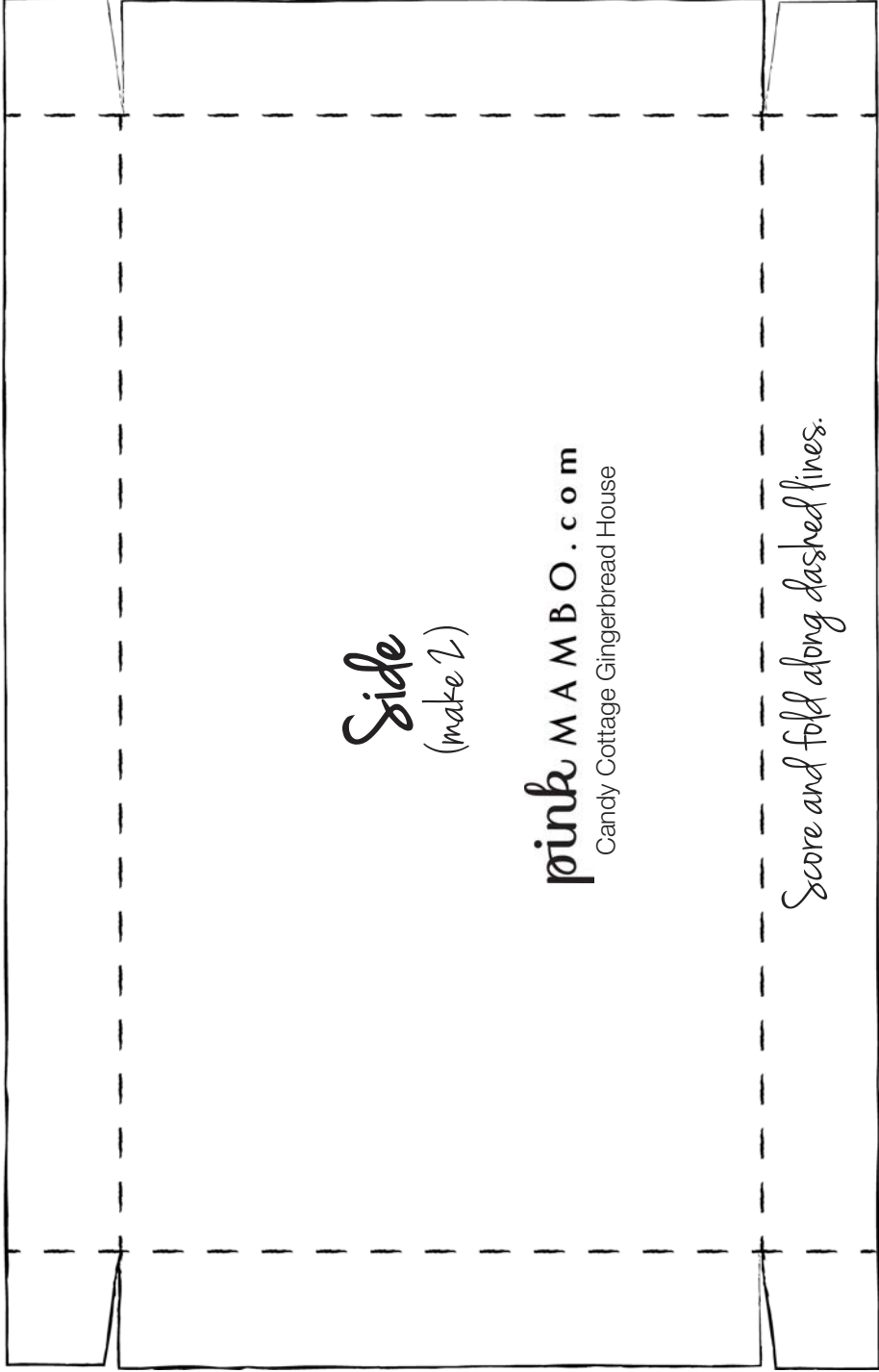


Front / Back
(make 2)

pink MAMBO.com
Candy Cottage Gingerbread House

Score and fold along dashed lines.



Side
(make 2)

pink M A M B O . c o m
Candy Cottage Gingerbread House

Score and fold along dashed lines.



The roof only requires one glue-tab.
For one roof half, score and fold along dashed line.
For the other roof half, cut along the dashed line.

Roof half
(make 2)

pink MAMBO.com
Candy Cottage Gingerbread House